

ADB Technology Co., Ltd.

Unshielded Construction - SMT / SPN Series

Feature

High current and inductance capacity.
 Specially designed for surface mounting equipment, good for high density applicaton.
 Low profile very effective in space-conscious applications.
 Low resistance and high-energy storage.

Application

Power supply for VCR, OA equipment, LCD TV,
 Notebook PC, DC/DC Conterver, DC/AC Inverter.

Product Identification

SPN 3316
1

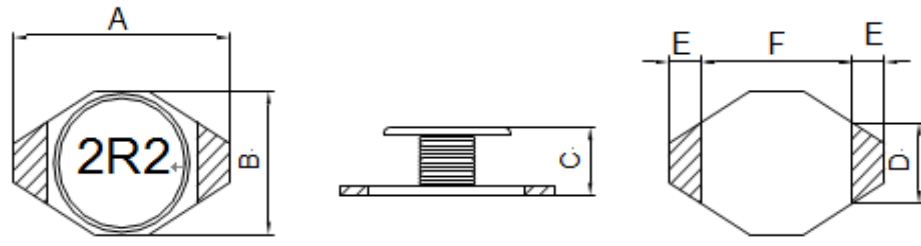
2R2
2

M
3

1. Series name.
2. Inductance.
3. Tolerance.(K=±10%,M=±20%)

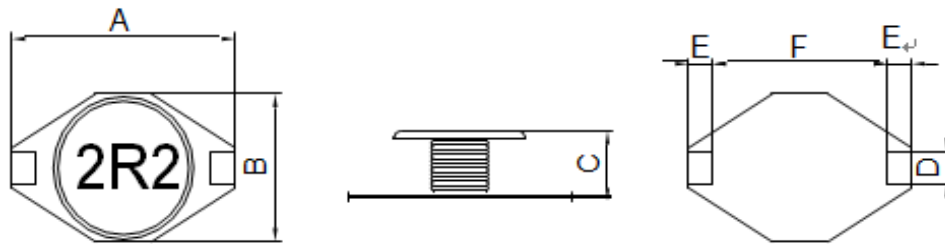


Configurations & Dimensions



Series Name	A	B	C	D	E	F
SPN 1608	6.6(MAX)	4.45(MAX)	2.92(MAX)	1.27(MAX)	1.02(MAX)	4.32(MAX)

Unit: mm



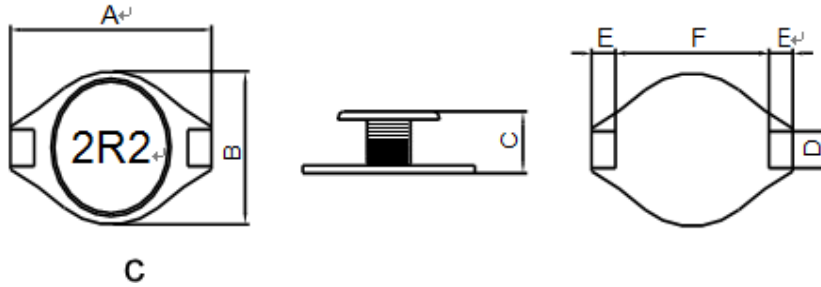
Series Name	A	B	C	D	E	F
SPN 3316	13.0±0.2	10.0±0.2	5.0±0.3	2.2±0.2	2.4±0.2	7.6±0.3
SPN 3340	13.0±0.2	10.0±0.2	11.0±0.3	2.2±0.2	2.4±0.2	7.6±0.3

Unit: mm

ADB Technology Co., Ltd.

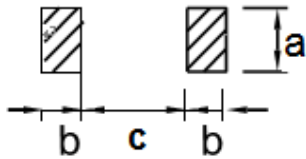
Unshielded Construction - SMT / SPN Series

Configurations & Dimensions



Series Name	A	B	C	D	E	F
SPN 5022	18.6±0.3	15.0±0.3	7.0±0.5	2.2±0.2	2.4±0.2	13.3±0.3

ADB



PCB Pattern Unit: mm

Series Name	a	b	c
SPN 1608	3.56(REF)	3.00(REF)	7.30(REF)
SPN 3316	2.80(REF)	3.00(REF)	7.30(REF)
SPN 3340	2.80(REF)	3.00(REF)	7.30(REF)
SPN 5022	2.80(REF)	3.00(REF)	12.7(REF)

ADB Technology Co., Ltd.

Unshielded Construction - SMT / SPN Series

Electrical Characteristics

SPN 1608 Series				
Part Number	Inductance (μ H)	Test Condition (Volt / Hz)	DC Resistance Max. (m)	Rated Current Max. (mA)
SPN 1608-1R0 __	1.0	0.1 / 100K	50	2,900
SPN 1608-1R5 __	1.5	0.1 / 100K	50	2,600
SPN 1608-2R2 __	2.2	0.1 / 100K	70	2,300
SPN 1608-3R3 __	3.3	0.1 / 100K	80	2,000
SPN 1608-4R7 __	4.7	0.1 / 100K	90	1,500
SPN 1608-6R8 __	6.8	0.1 / 100K	130	1,200
SPN 1608-100 __	10	0.1 / 100K	160	1,100
SPN 1608-150 __	15	0.1 / 100K	230	900
SPN 1608-220 __	22	0.1 / 100K	270	700
SPN 1608-330 __	33	0.1 / 100K	510	580
SPN 1608-470 __	47	0.1 / 100K	640	500
SPN 1608-680 __	68	0.1 / 100K	860	500
SPN 1608-101 __	100	0.1 / 100K	1,270	310
SPN 1608-151 __	150	0.1 / 100K	2,000	270
SPN 1608-221 __	220	0.1 / 100K	3,110	220
SPN 1608-331 __	330	0.1 / 100K	3,800	180
SPN 1608-471 __	470	0.1 / 100K	5,060	160
SPN 1608-681 __	680	0.1 / 100K	9,200	140
SPN 1608-102 __	1000	0.1 / 100K	13,800	100

ADB Technology Co., Ltd.

Unshielded Construction - SMT / SPN Series

Electrical Characteristics

SPN 3316 Series				
Part Number	Inductance (μH)	Test Condition (Volt / Hz)	DC Resistance Max. (m)	Rated Current Max. (mA)
SPN 3316-1R0 __	1.0	0.1 / 100K	9	9,000
SPN 3316-1R5 __	1.5	0.1 / 100K	10	8,000
SPN 3316-2R2 __	2.2	0.1 / 100K	12	7,000
SPN 3316-3R3 __	3.3	0.1 / 100K	15	5800
SPN 3316-4R7 __	4.7	0.1 / 100K	18	5200
SPN 3316-6R8 __	6.8	0.1 / 100K	27	4300
SPN 3316-100 __	10	0.1 / 100K	38	3400
SPN 3316-150 __	15	0.1 / 100K	46	3000
SPN 3316-220 __	22	0.1 / 100K	85	2500
SPN 3316-330 __	33	0.1 / 100K	100	2000
SPN 3316-470 __	47	0.1 / 100K	140	1800
SPN 3316-680 __	68	0.1 / 100K	200	1400
SPN 3316-101 __	100	0.1 / 100K	280	1100
SPN 3316-151 __	150	0.1 / 100K	400	900
SPN 3316-221 __	220	0.1 / 100K	610	800
SPN 3316-331 __	330	0.1 / 100K	1020	1,000
SPN 3316-471 __	470	0.1 / 100K	1270	500
SPN 3316-681 __	680	0.1 / 100K	2020	400
SPN 3316-102 __	1000	0.1 / 100K	3000	300
SPN 3340 Series				
Part Number	Inductance (μH)	Test Condition (Volt / Hz)	DC Resistance Max. (m)	Rated Current Max. (mA)
SPN 3340-100 __	10	1.0 / 100K	40	8,000
SPN 3340-150 __	15	1.0 / 100K	50	7,000
SPN 3340-220 __	22	1.0 / 100K	66	5,500
SPN 3340-330 __	33	1.0 / 100K	80	4,000
SPN 3340-470 __	47	1.0 / 100K	110	3,800
SPN 3340-680 __	68	1.0 / 100K	170	3,000
SPN 3340-101 __	100	1.0 / 100K	220	2,500
SPN 3340-151 __	150	1.0 / 100K	340	2,000
SPN 3340-221 __	220	1.0 / 100K	440	1,600
SPN 3340-331 __	330	1.0 / 100K	700	1,200
SPN 3340-391 __	390	1.0 / 100K	860	1,100
SPN 3340-471 __	470	1.0 / 100K	950	1,000
SPN 3340-681 __	680	1.0 / 100K	1,200	1,000
SPN 3340-102 __	1000	1.0 / 100K	2,000	800

ADB Technology Co., Ltd.

Unshielded Construction - SMT / SPN Series

Electrical Characteristics

SPN 5022 Series				
Part Number	Inductance (μ H)	Test Condition (Volt / Hz)	DC Resistance Max. (m)	Rated Current Max. (mA)
SPN 5022-1R0 __	1.0	0.1 / 100K	9	17,000
SPN 5022-1R5 __	1.5	0.1 / 100K	12	16,000
SPN 5022-2R2 __	2.2	0.1 / 100K	14	16,000
SPN 5022-3R3 __	3.3	0.1 / 100K	18	14,000
SPN 5022-5R6 __	5.6	0.1 / 100K	20	12,000
SPN 5022-100 __	10	0.1 / 100K	31	8,000
SPN 5022-150 __	15	0.1 / 100K	36	7,000
SPN 5022-220 __	22	0.1 / 100K	47	6,000
SPN 5022-330 __	33	0.1 / 100K	66	5,000
SPN 5022-470 __	47	0.1 / 100K	86	4,000
SPN 5022-680 __	68	0.1 / 100K	130	3,000
SPN 5022-101 __	100	0.1 / 100K	190	2,400
SPN 5022-151 __	150	0.1 / 100K	250	2,100
SPN 5022-221 __	220	0.1 / 100K	380	1,900
SPN 5022-331 __	330	0.1 / 100K	560	1,100
SPN 5022-471 __	470	0.1 / 100K	850	1,100
SPN 5022-681 __	680	0.1 / 100K	1100	960
SPN 5022-102 __	1000	0.1 / 100K	1300	800