

ADB Technology Co., Ltd.

Shielded Construction - SMD /

Feature

High current and inductance capacity.
 Specially designed for surface mounting.
 equipment, good for high density application.
 Low profile very effective in space-conscious applications.
 Low resistance and high-energy storage.

Application

Power supply for VTR, OA equipment, LCD TV,
 Notebook PC, DC/DC Converter, DC/AC Inverter.

Product Identification

SPY 3316

1

2R2

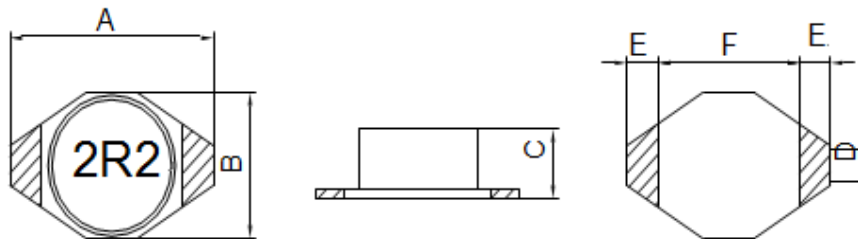
2

K

3

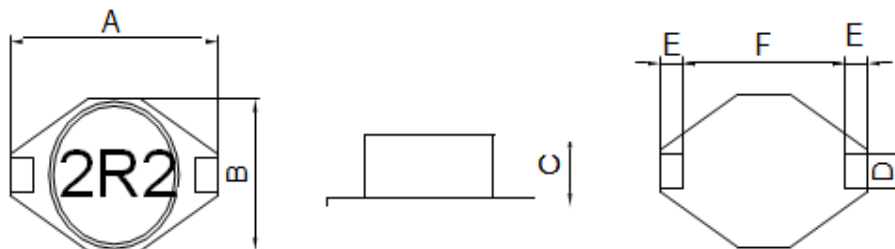
1. Series name.
2. Inductance.
3. Tolerance. (K=±10%,M=±20%)

Configurations & Dimensions



Series Name	A	B	C	D	E	F
SPY 1608	6.60(MAX)	4.45(MAX)	2.92(MAX)	1.27±0.2	1.02±0.2	4.32±0.3

Unit: mm



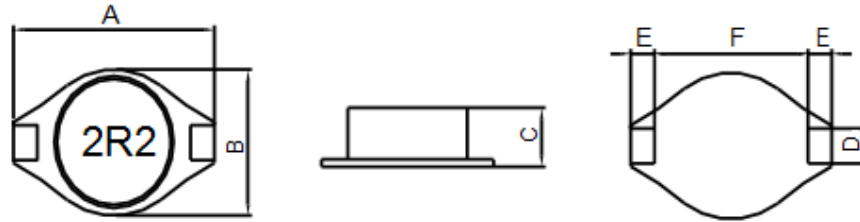
Series Name	A	B	C	D	E	F
SPY 3316	13.0±0.2	10.0±0.2	5.0±0.3	2.2±0.2	2.4±0.2	7.6±0.3

Unit: mm

ADB Technology Co., Ltd.

Shielded Construction - SMD /

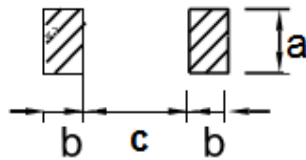
Configurations & Dimensions



Series Name	A	B	C	D	E	F
SPY 5022	19.2±0.3	15.0±0.3	7.0±0.5	2.2±0.2	2.4±0.2	13.3±0.3

Unit: mm

ADB



PCB Pattern Unit: mm

Series Name	a	b	c
SPY 1608	3.56(REF)	1.4(REF)	4.06(REF)
SPY 3316	2.80(REF)	3.0(REF)	7.30(REF)
SPY 5022	2.80(REF)	3.0(REF)	12.7(REF)

Unit: mm

ADB Technology Co., Ltd.

Shielded Construction - SMD / SPYSeries

Electrical Characteristics

SPY 1608 Series				
Part Number	Inductance (μ H)	Test Condition (Volt / Hz)	DC Resistance Max. (m)	Rated Current Max. (mA)
SPY 1608-1R0 __	1.0	0.1 / 100K	40	3,000
SPY 1608-1R5 __	1.5	0.1 / 100K	45	2,300
SPY 1608-2R2 __	2.2	0.1 / 100K	50	1,800
SPY 1608-3R3 __	3.3	0.1 / 100K	55	1,600
SPY 1608-4R7 __	4.7	0.1 / 100K	60	1,400
SPY 1608-6R8 __	6.8	0.1 / 100K	65	1,200
SPY1608-100 __	10	0.1 / 100K	75	1,000
SPY1608-150 __	15	0.1 / 100K	90	800
SPY1608-220 __	22	0.1 / 100K	110	700
SPY1608-330 __	33	0.1 / 100K	190	600
SPY1608-470 __	47	0.1 / 100K	230	500
SPY1608-680 __	68	0.1 / 100K	290	400
SPY1608-101 __	100	0.1 / 100K	480	300
SPY1608-151 __	150	0.1 / 100K	590	260
SPY1608-221 __	220	0.1 / 100K	770	220
SPY1608-331 __	330	0.1 / 100K	1,400	200
SPY1608-471 __	470	0.1 / 100K	1,800	190
SPY1608-681 __	680	0.1 / 100K	2,200	160
SPY1608-102 __	1000	0.1 / 100K	3,400	150
SPY1608-152 __	1500	0.1 / 100K	4,200	120
SPY1608-222 __	2200	0.1 / 100K	8,500	100
SPY1608-332 __	3300	0.1 / 100K	11,000	80
SPY1608-472 __	4700	0.1 / 100K	13,900	60
SPY1608-682 __	6800	0.1 / 100K	25,000	40
SPY1608-103 __	10000	0.1 / 100K	32,800	20

ADB Technology Co., Ltd.

Shielded Construction - SMD / SPY Series

Electrical Characteristics

<i>SPY 3316 Series</i>				
Part Number	Inductance (μ H)	Test Condition (Volt / Hz)	DC Resistance Max. (m Ω)	Rated Current Max. (mA)
SPY 3316-1R0 __	1.0	0.1 / 100K	21	5,600
SPY 3316-1R5 __	1.5	0.1 / 100K	22	5,200
SPY 3316-2R2 __	2.2	0.1 / 100K	27	5,000
SPY 3316-3R0 __	3.0	0.1 / 100K	30	3,900
SPY 3316-4R7 __	4.7	0.1 / 100K	40	3,200
SPY 3316-6R8 __	6.8	0.1 / 100K	55	2,800
SPY 3316-100 __	10	0.1 / 100K	65	2,400
SPY 3316-150 __	15	0.1 / 100K	85	2,000
SPY 3316-220 __	22	0.1 / 100K	100	1,600
SPY 3316-330 __	33	0.1 / 100K	160	1,400
SPY 3316-470 __	47	0.1 / 100K	470	1,000
SPY 3316-680 __	68	0.1 / 100K	340	900
SPY 3316-101 __	100	0.1 / 100K	420	800
SPY 3316-151 __	150	0.1 / 100K	520	650
SPY 3316-221 __	220	0.1 / 100K	800	500
SPY 3316-331 __	330	0.1 / 100K	1200	400
SPY 3316-391 __	390	0.1 / 100K	1400	350
<i>SPY 5022 Series</i>				
Part Number	Inductance (μ H)	Test Condition (Volt / Hz)	DC Resistance Max. (m Ω)	Rated Current Max. (mA)
SPY 5022-100 __	10	0.1 / 100K	30	7360
SPY 5022-150 __	15	0.1 / 100K	35	6400
SPY 5022-220 __	22	0.1 / 100K	45	5050
SPY 5022-330 __	33	0.1 / 100K	60	4250
SPY 5022-470 __	47	0.1 / 100K	80	3550
SPY 5022-680 __	68	0.1 / 100K	115	3,010
SPY 5022-101 __	100	0.1 / 100K	180	2,460
SPY 5022-151 __	150	0.1 / 100K	220	2000
SPY 5022-221 __	220	0.1 / 100K	320	1630
SPY 5022-331 __	330	0.1 / 100K	500	1330
SPY 5022-471 __	470	0.1 / 100K	750	1,100
SPY 5022-681 __	680	0.1 / 100K	1100	930
SPY 5022-102 __	1000	0.1 / 100K	1500	780